



Catholic Parish of Wellington South

In the spirit of Suzanne Aubert

We are a community of joyful disciples growing together and sharing Christ's message

Ko tātou tetahi hāpori o ngā ākonga harikoo, e whakatupu ngātahi ana, e ruia ana te karere o Hēhu Karaiti



Sunday February 18 1st Sunday of Lent

It is time to act, and in Lent, to act also means to pause. To pause in prayer, in order to receive the word of God, to pause like the Samaritan in the presence of a wounded brother or sister. Prayer, almsgiving and fasting are not three unrelated acts, but a single movement of openness and self-emptying, in which we cast out the idols that weigh us down, the attachments that imprison us. Then the heart will revive. Slow down, then, and pause!

Pope Francis, Message for Lent 2024.

Now

First Sunday of Lent

Sunday 18 Feb

Coming up

Parent Evening Sacraments

Tuesday 27 Feb

St Anne's Church 6.30pm

Combined Children's Mass

Sunday 3 March

St Francis de Sales 10.30am

Weekend Mass

Vigil Mass

6pm at St Francis de Sales

Sunday Mass:

9am St Anne's

10.30am St Francis de Sales

5pm St Anne's

Samoan Mass every 3rd Sunday

St Bernard's Mass 10.30am every 1st Sunday at the school Hall

Weekday Mass

Mon: 9am Mass St Francis de Sales.

Tues: 10am Liturgy at St Anne's 13 Feb

Wed: 9am St Bernard's in Term time

Thurs: 10am St Anne's Mass

Fri: 9.15am St Francis De Sales Mass

Sat: 10am St Anne's Mass

From Fr Doug

Dear Parishioners

Even though repentance and prayer are always appropriate in our Spiritual life, they are especially appropriate during Lent. These are graced filled moments in our lives if we truly believe. Lent is a great window of opportunity for this. It is the Church's 'holy spring'. During it we prepare for coming of the most holy time of our year in 2024, Easter. Yes, it is a time of prayer, penance and of giving ourselves to others in the ways of faith in making our relationship with Jesus real.

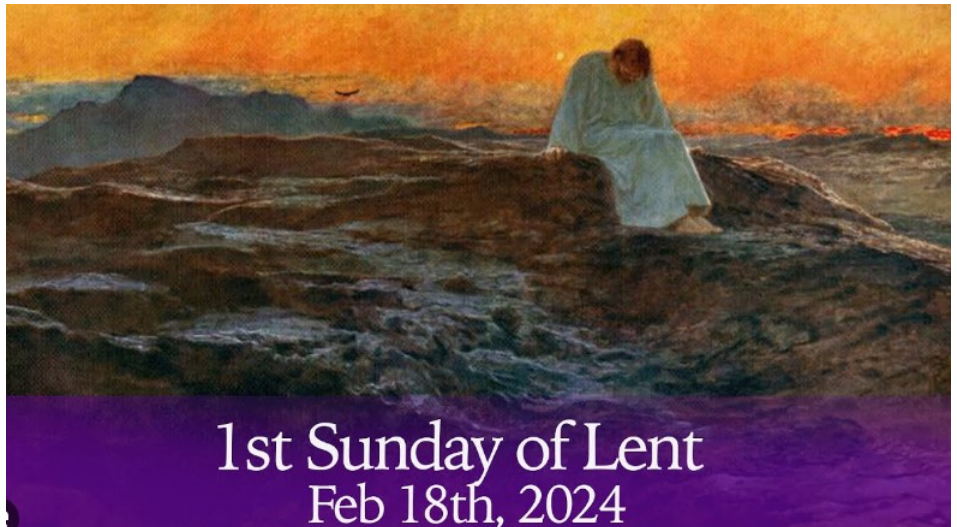
It is a time of great joy also. It is like our spiritual springtime as we progress towards Easter, we feel closer to Jesus because of the consequences of His great love that He has for us. He dies for us, to save and redeem us.

We are called to love unconditionally as Jesus did, to show kindness and compassion, to act justly, respecting the Christian dignity of all others and always to walk humbly with our God.

In his message for Lent 2024, Pope Francis invites the faithful to "pause" for prayer and to assist our brothers and sisters in need, in order to change our own lives and the lives of our communities.

With every blessing

Fr Doug



Responsorial Psalm: Your ways, O Lord, are love and truth to those who keep your covenant.

Gospel acclamation: One does not live on bread alone, but on every word that comes forth from the mouth of God.

Remembering the Holy Souls

RIP:

Anniversary: Maria Barnao, Tom Kennedy, Helen Gregory
Monica O'Brien, Josephine King, Joseph Desmond



For the latest information visit the Parish Website - wellingtonsouthcatholic.org

Ash Wednesday at St Anne's

The Ash cross symbolizes our mortality and penance for our sins



Almsgiving - Fasting - Prayer

The time is now to empower vulnerable families to thrive. **Lenten Giving Envelopes** for the Bishops' Lent Appeal 2024 are available from the foyer. This year, we are using a single giving envelope. Please give generously to Caritas



Baptisms: We welcome into our Parish family **Henry and Alexander Blood** who were Baptised at St Francis de Sales Church last Saturday by Fr Doug

2024 Sacramental programme

Enrolments for 2024 Sacramental programme close on February 26. This programme is available to all children who have been baptised into the Catholic faith and reached Year 4 or above in the primary school system. The Parent evening is at St Anne's on Tuesday February 27 at 6.30pm. Enrolment forms available from the Parish Website.

Readings for this week

Sun 18 Feb: Gen 9:8-15; Peter 3:18-22 ;Mk 1:12-15
Mon 19 Feb: Lev 19:1-2,11-18; Mt 25:31-46
Tue 20 Feb: Isaiah 55:10-11; Mt 6:7-15
Wed 21 Feb: Jonah 3:1-10; Lk 11:29-32
Thurs 22 Feb: Peter 5:1-4; Mt 16:13-19
Fri 23 Feb: Ez 18:21-28; Mt 5:20-26
Sat 24 Feb: Deut 26:16-19; Mt 5:43-48



Lenten Reflection Programme

Wednesdays at 10.30am at Village at the Park Unit DG06 at 130 Rintoul St. Parking should be available.

Contact Sr Elizabeth 0276805002

Fridays after the Stations of the Cross

English and Samoan. Contact Koleta Konise 0273644548

Fridays after 9.15 Mass at St Francis de Sales

Contact Fr Ravi 021 08660326

Women's Voices: Final consultation for the Synod.

Two opportunities are planned depending on interest, to run Women's Voices sessions :

Tuesday 5th March – face to face at St Joseph's Church, Mt Victoria @ 7pm

Wednesday 6th March – online @ 7pm

Contact I.hensel@wn.catholic.org.nz by **Tuesday 20 Feb**

Social Justice Group

Volunteers needed to be involved in the combined Joseph's/SMOA/Wellington South Social Justice Group? We meet to support the collection of household goods to help with the setting up of the refugee house, and advocate for the living wage for workers in Catholic employment.

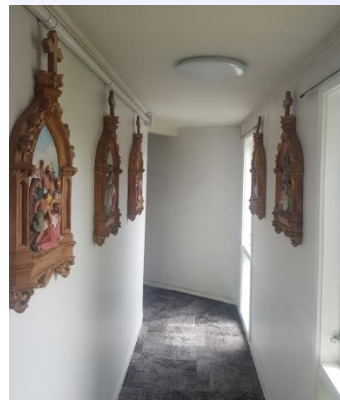
If you know someone particularly from SFDS or St Bernard's who you could ask please do so. And we need two or three more people from St Anne's to work with Luwi and Lesley.

EWaste collection Saturday 24 February 9am – 2pm at St Catherine's College, Upper Bourke St, Kilbirnie. Small cash fee per item. 027-245-8859.

The **Annual Mission Fair** of the Missionary Sisters of St. Peter Claver on **Saturday 24th February** 2024 from 10am to 1.00 pm at Missionary Sisters Of St Peter Claver convent grounds- 1 Mersey Street, Island Bay.

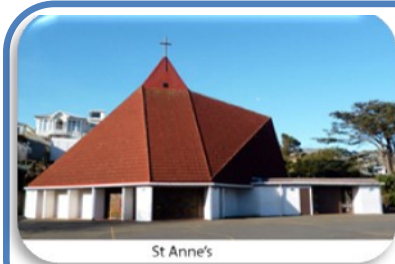
Giftng: Our primary gift is ourselves, putting the gifts and talents we have at the service of others. But we also need to give financially; to give as we are able. Our financial giving, like the use of our resources and talents, is used in our Parish and in the Archdiocese, to spread the Good News of Jesus, who alone can fulfil our needs. At this time, the Parish would be grateful if you could review your level of gifting and if you may be gifting by automatic payment to also review

the amount of this contribution. As always with thanks from the Finance committee



The lovely Stations of the Cross

rescued from St Bernard's Church before it was sold will be on display after Masses during Lent. They have been installed in the long walkway between the Sacristy and the Presbytery in Island Bay.



St Anne's

Fr Doug Shepherd - Parish Priest

027 248 3562

doug.shepherd@wellingtonsouthcatholic.org

Fr Ravi Kumar - Assistant Priest

ravikmal@gmail.com 021 08660326

Parish Bank Details ADW-CPWS: 02-0576-0064832-00

Parish Office: 22 Emmett Street Newtown

Telephone - 934 4099; office@wellingtonsouthcatholic.org; Web Site: <https://wellingtonsouthcatholic.org>



St Francis de Sales